



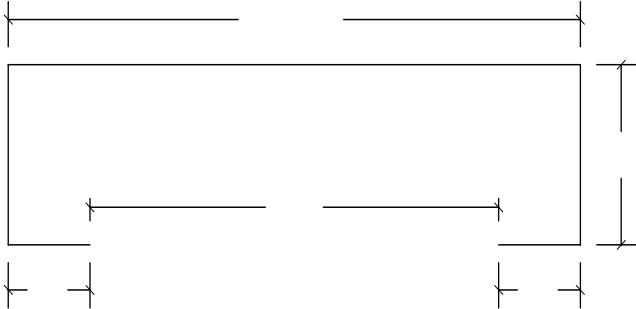
Info we need for free designs
No Appointment Necessary

Designers available Monday-Friday 10:00am-6:00pm
Saturday 10:00am-7:00pm
Sunday 10:00am-6:00pm

1. Measure the space

Measure wall-to-wall from inside the closet or pantry (baseboard-to-baseboard)

It doesn't matter if your design is for a reach-in, walk-in, or pantry, the measurements will give us a clear picture of your space.



- Floor to ceiling
Door opening
Front to back
Side to side (w/out baseboard)
Side to side (with baseboard)
Door frame to right wall
Door frame to left wall

Name:
Address:
Phone #:
E-Mail:

Organize It
5440 Sunrise Blvd
Citrus Heights, CA 95610
Phone: 916-961-5454
Fax: 916-200-0370
info@organizeit-online.com

2. Tell us about your space:

Choose one (Please use a separate sheet for each design)

- Linen closet
Hall closet
Pantry
Bedroom closet

- His
Hers
His & Hers
Child's

Is closet shared by a sibling? Yes No

Type of doors(s)

- Sliding..... 2 doors or 3 doors
Bi-fold
Hinged
Swings in Swings out
Hinged on right Hinged on left

& Tell us about your needs:

Hanging Garments

Given the space, I would like feet of long hang.
Given the space, I would like feet of short hang.

These measurements will function only as a guide to our designer, the design may vary depending on the layout and space available.

Folded Garments Given a choice, providing the room you have, how would you prefer to store your clothing.

- Drawers Shelves Baskets All

Pairs of Shoes Hers His

Accessories

- Ties
Belts
Hats
Handbags
Other

Large items to Store

Blank lines for listing large items to store.

3. What finish and type of closet system do you prefer?

- freedomRail: White Maple Cherry Nickel wire White wire
Creations (Traditional): Custom Color (Available in over 20 colors)